

The YOPP Data Portal A User's Guide

Øystein Godøy, SiriJodha Khalsa

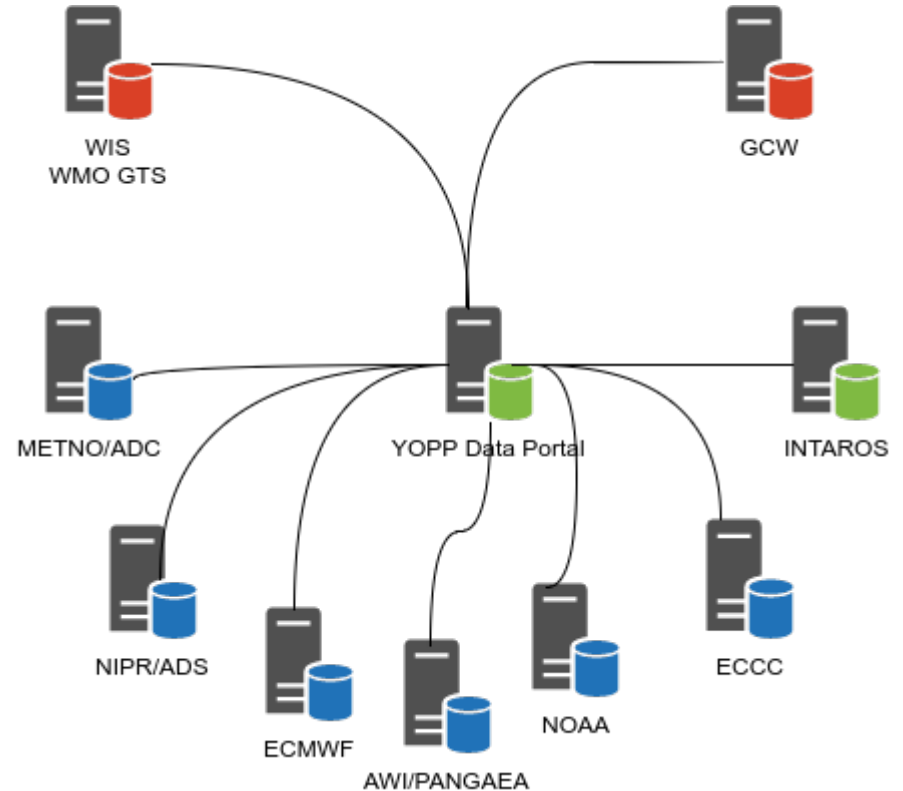


WMO OMM

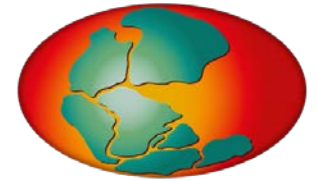
World Meteorological Organization
Organisation météorologique mondiale

YOPP Data Portal

- Purpose
 - To provide an overview of datasets relevant to YOPP
 - To provide access to datasets wherever possible
 - Real time data streams
 - Archived data
 - To connect YOPP with WMO Information System
 - Including WMO GTS
- Physically Distributed Model
 - ✓ One central discovery metadata repository harvesting information from contributing data centres
 - ✓ Does not host data (with some exceptions), all data served from host data centre
 - ✓ Contributing data centres considered authoritative for information on data sets
 - ✓ Standardisation of data documentation and interfaces to data and discovery metadata is required for full integration



PANGAEA serves as a YOPP Data Repository



PANGAEA.

- YOPP-relevant data flagged in PANGAEA
- Discovery metadata are harvested by the YOPP Data Portal
- Insert 'YOPP' in label field when uploading data
- Use NetCDF/CF (including ACDD elements) for reuse purposes
- Think carefully through segmentation of data, especially modeling data
- Build relations between children and parent of a dataset
- Contact:
 - Øystein Godøy o.godoy[at]met.no
 - Amelie.Driemel[at]awi.de
 - office@polarprediction.net

Other data repositories...

Make sure the repository
fulfils technical requirements

i.e. put them in contact with
the YOPP data portal to clarify
details

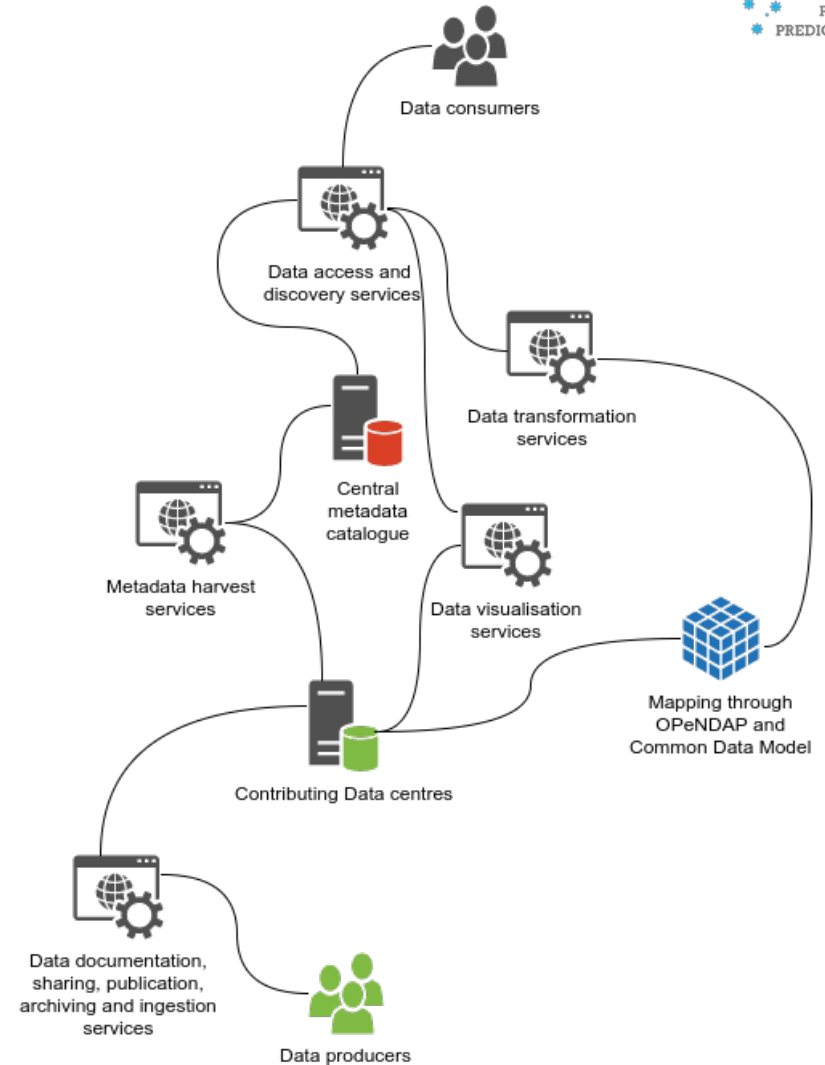


Technical documentation

*Guidance for data centres contributing
to YOPP*

YOPP Data Portal Interaction

- Data discovery
 - Harvesting discovery metadata
 - OAI-PMH, (OGC CSW, OpenSearch)
 - Need GCMD Science Keywords
- Data access
 - OPeNDAP
 - NetCDF/CF preferably with ACDD
- Data visualisation
 - OGC WMS



Preparing data

- NetCDF following the Climate and Forecast Convention 1.6 or higher
 - Add global attribute featureType for non gridded data
 - <http://cfconventions.org/>
- Preferably including Attribute Convention for Dataset Discovery (ACDD)
 - http://wiki.esipfed.org/index.php/Attribute_Convention_for_Data_Discovery_1-3
- Segment data
 - E.g. separate surface, pressure levels and model levels in separate files
 - Simplifies aggregation and visualisation through OGC WMS if supported
 - Do not combine station data in files

WMO Year of Polar Prediction

VERIFICATION PLANS: Supersite Multi-Variate High-Frequency Observations:
An Opportunity for Model Process Evaluation



Courtesy of
Taneil Uttal

Current Status

- The data portal is up and running
 - Functionality
 - Search
 - Download - single products as is
 - Basket - download multiple products, combined visualisation etc some functionality to be implemented
 - Visualisation
 - Gridded
 - Timeseries – to be deployed
 - Profiles – in progress
- Data input
 - WMO GTS
 - Arctic Resolution 40 weather (fixed/moving) stations and radiosondes dumped to NetCDF/CF served through OPeNDAP – in progress
 - ITP data dump in place
 - Continuation of data download from WHOI, conversion to NetCDF/CF – in progress
- Guidance documentation
 - Concept document available
 - Interoperability guidelines available
 - Contact form available
 - Issue tracker to be added

File Edit View History Bookmarks Tools Help

Metadata search | Year of P X +

https://yopp.met.no/metadata_search

Most Visited Getting Started NorDataNet | Arctic D...

YOPP DATA PORTAL

YEAR OF POLAR PREDICTION

YOPP HOME DATA PORTAL NEWS AVAILABLE DATASET DOCUMENTS TASK TEAM CONTACT US

Home / Metadata search

Metadata search

YOPP OBSERVATION LAYER FOR THE ANTARCTIC

YOPP OBSERVATION LAYER FOR THE ARCTIC

BASKET

Full text search

Search words

Data collection period

Start date

1967-01-01

End date

yyyy-mm-dd

Geographical search

Bounding box

Institutions

Investigator

Topics and variables

Search Reset

https://yopp.met.no/metadata_search

Thank you

YOPP DATA PORTAL


YEAR OF POLAR PREDICTION

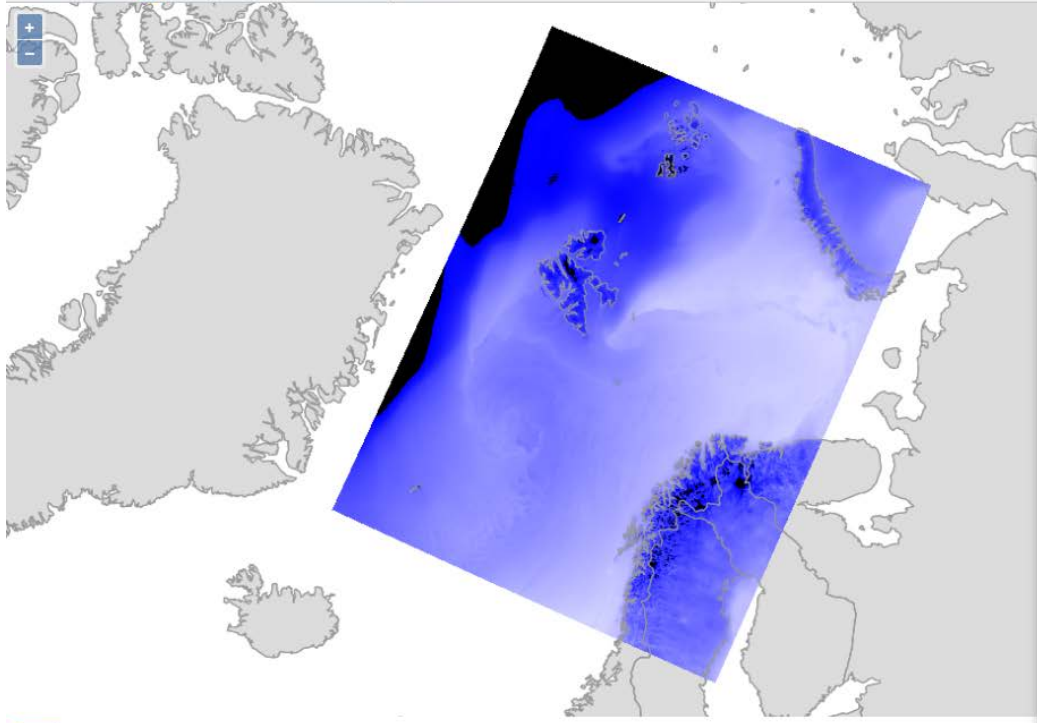
- YOPP HOME
- DATA PORTAL NEWS
- AVAILABLE DATASET
- DOCUMENTS
- TASK TEAM
- CONTACT US

Home / Search results

Number of datasets found: 15

Search results

<input type="checkbox"/>	Dataset name	Institutions	Project	Abstract	Collection period
<input type="checkbox"/>	<p>YOPP (Year Of Polar Prediction)</p> <p>Metadata</p>	European Centre for Medium-Range Weather Forecasts		Enable a significant improvement in environmental prediction capabilities for the polar regions and beyond, by coordinating a period of intensive observing, modelling, verification, user-engagement and education activities. The Year of Polar Prediction (YOPP) is one of the key elements of the Polar Prediction Project. YOPP is scheduled to take place from mid-2017 to mid-2019.	2017-05-01T12:00:00Z to 2019-05-31T12:00:00Z
<input type="checkbox"/>	<p>met-arome-arcctic-2p5km-forecast</p> <p>Download data</p> <p>Metadata</p> <p>Transform</p> 	Norwegian Meteorological Institute	Public service	Post processed forecasts based on the latest run of the AROME-Arctic model. Parameters like temperature, cloud cover, precipitation and wind have gone through additional post-processing. Horizontal data resolution is 2,5km. The forecast is updated 4 times per day. For historical runs see http://thredds.met.no/thredds/catalog/aromearcticpp/catalog.html	2016-02-01T12:00:00Z to



2018-01-05T18:00:00.000Z
Back to results Basket Reset

▼ arome arctic pp 2 5km latest.nc

- ▶ Fog
- ▶ precipitation_amount
- ▶ surface_air_pressure
- ▼ air_temperature
 - stay visible
 - boxfill/redblue
 - air_temperature (K)

308
294.25
280.5
266.75
253
- ▶ relative_humidity
- ▶ strike_probability
- ▶ number_of_tracks
- ▶ medium_type_cloud_area_fraction