

South African Weather Service

Year Of Polar Prediction Southern Hemisphere SOP Contributions

Presented by: Tania Williams



Content

- Introduction to SANAP
- Voyage to Antarctica
- Contributions to YOPP

SANAP

- South African National Antarctica Program (SANAP)

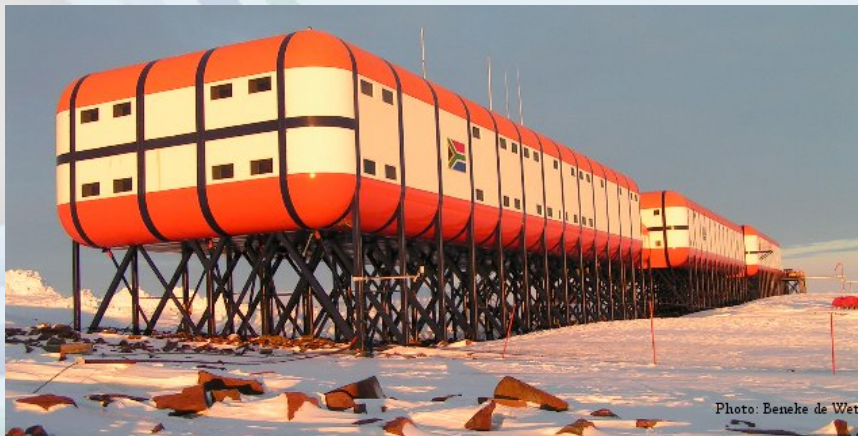
- Antarctica, Marion, Gough

- Automatic weather station and manual observations
 - Upper air ascents (Marion and Gough)



- **SANA E IV** (South African National Antarctic Expedition)

- Vesleskarvet, Queen Maud Land. ($71^{\circ}40'22''S$ $2^{\circ}50'26''W$)



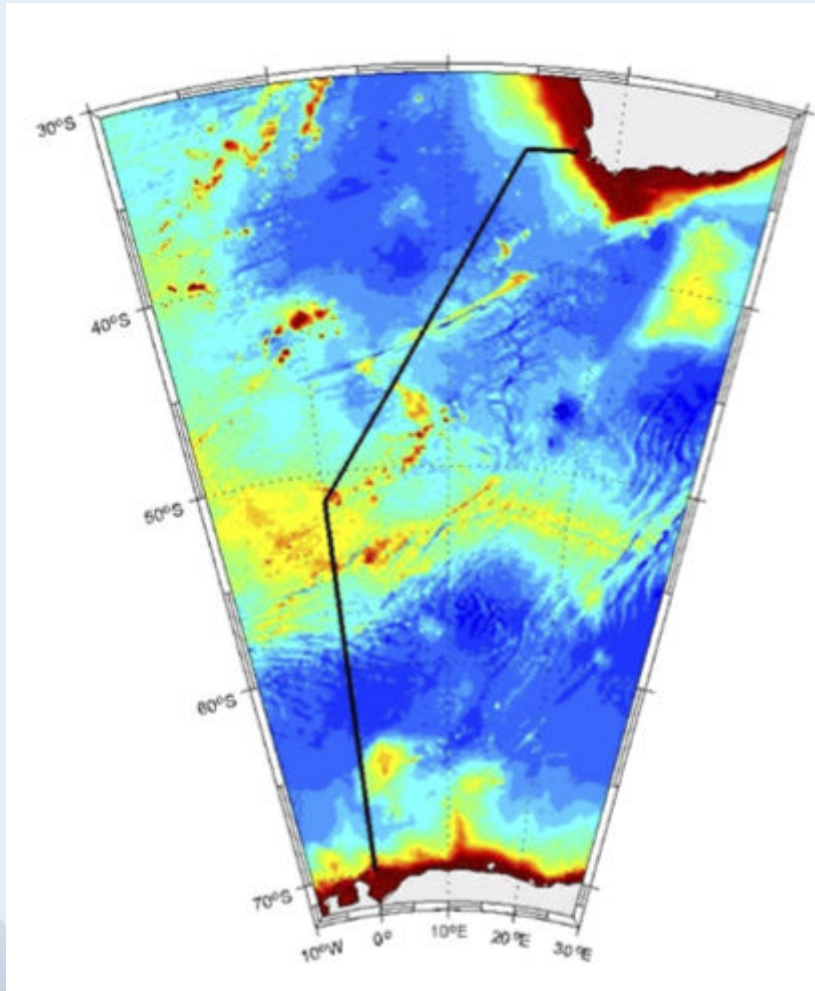
Voyage

SA AGULHAS II

- Ice Breaker owned by Department Of Environmental Affairs (DEA)
- well-equipped research and supply vessel
- SAWS Met Office On-board.
- Takeover Period:
November to February



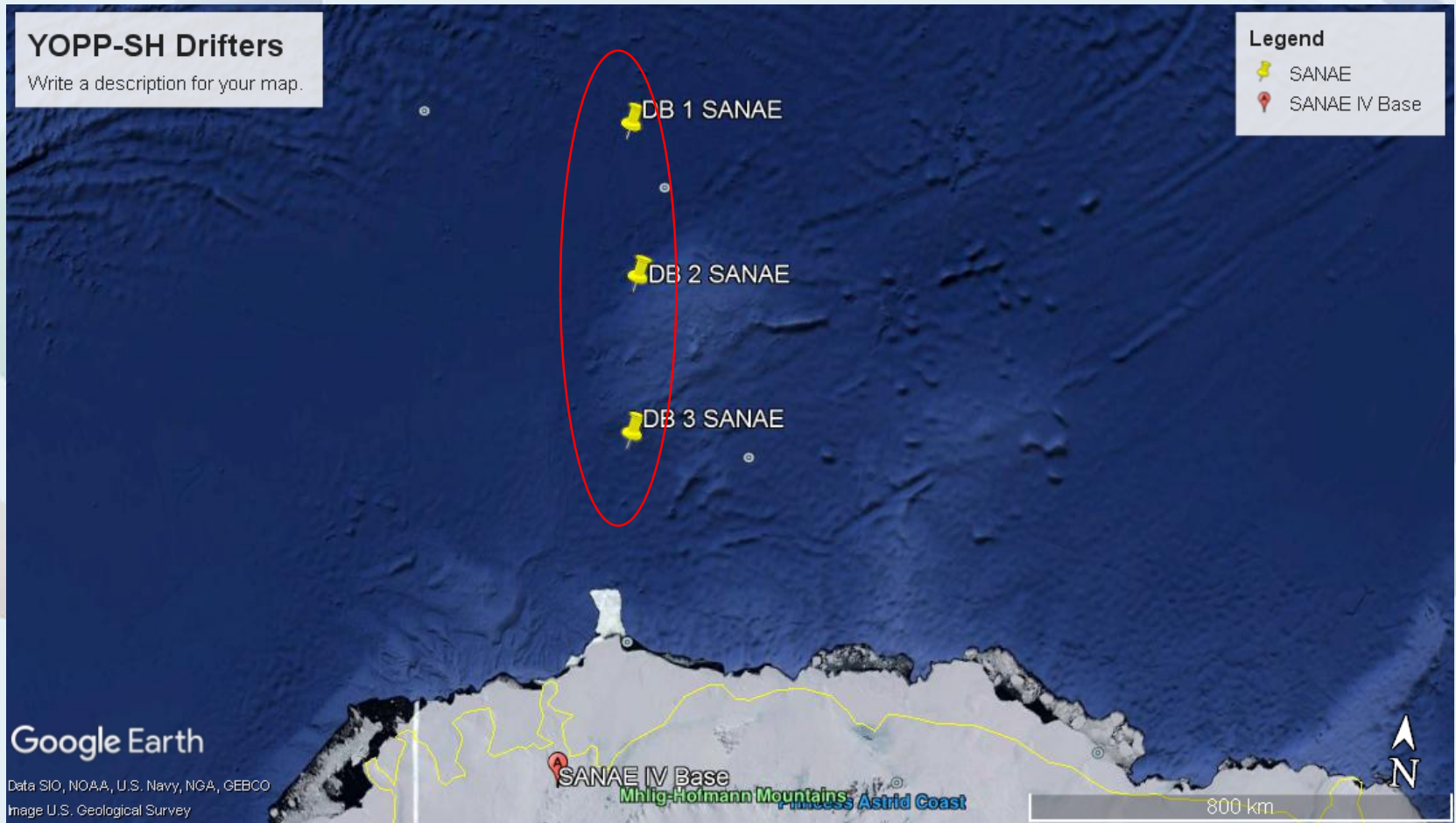
Voyage (2)



- Drifting Weather Buoy Deployments
- SYNOPS
- Radiosonde ascents*
- Ozone Sounding**



Contribution to YOPP



**South African
Weather Service**

Thank you

