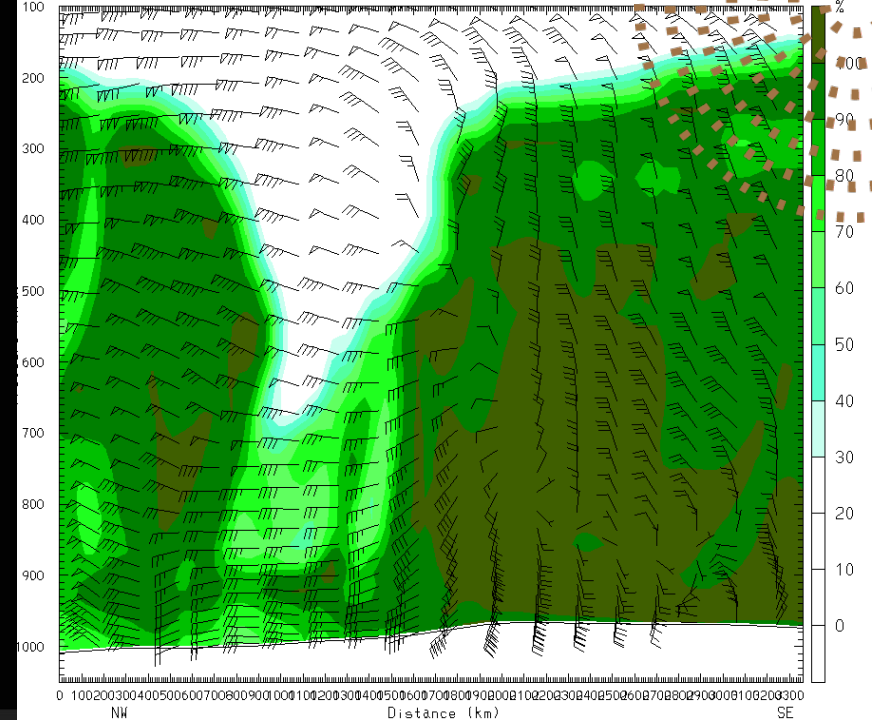
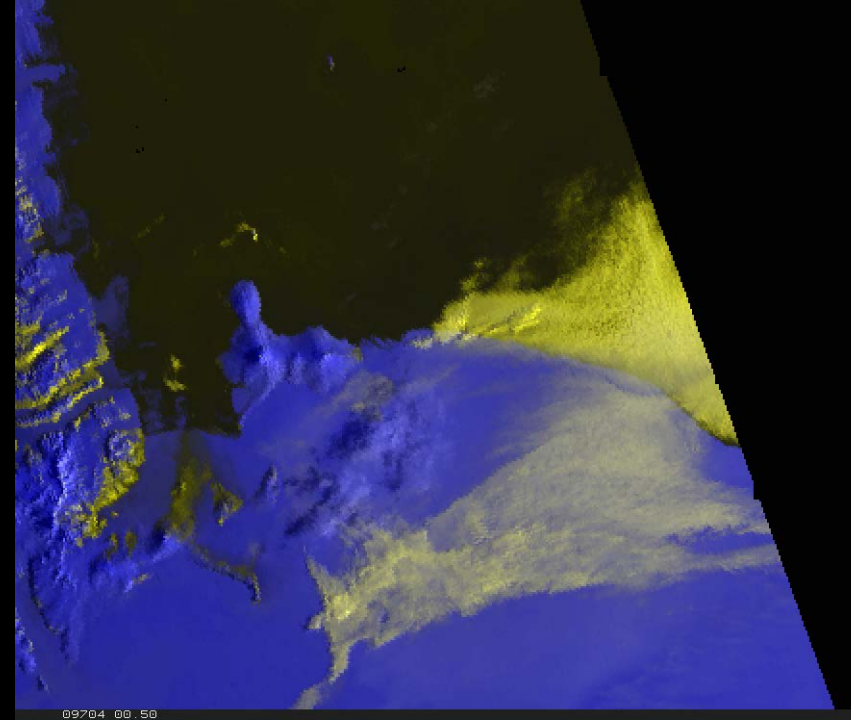
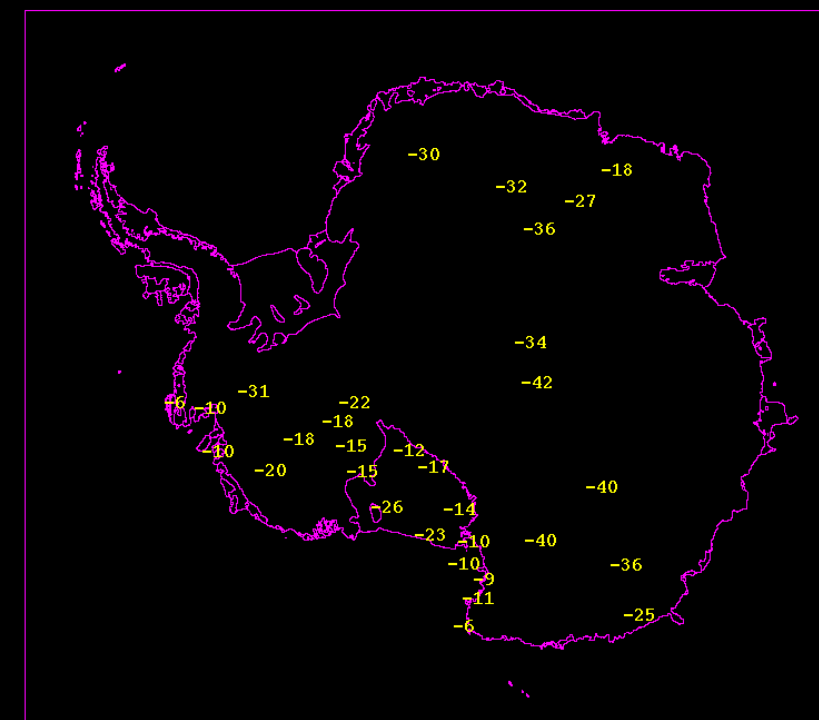




The Antarctic Internet Data Distribution (Antarctic-IDD) System & You: *Workshop, Demonstration, & Discussion*

- Your Hosts:
- Matthew Lazzara
- Taylor Norton
- Dave Mikolajczyk



Outline

- Why LDM?
 - Utility, Value, etc.
- How it works...(the Matt Lazzara version)
- (Installation – show and tell only)
- Configuration
 - ldmd.conf
 - pqact.conf
 - ldadmin watch – see the full stream....
- Data
 - Inserting
 - Requesting
- (Capabilities – discussion only)
- Community Contributions
- Network Design



Why LDM?

Sending:

- Contribute to AMRDC 😊
- Getting your data product to product end-users
- Opportunity to use the actual data elements...

Receiving:

- Data quantization
- Throttle to smaller volume
- “Instant” availability
- Post processing/filing upon arrival

How it works...

- Based on remote procedure call or RPC technology
 - (so not really new...)
- Communications over a reserved transmission control protocol or TCP port 388
 - (can make alternations if you wish...some consequences)
- Does NOT push data to you....you request!
- This is a “branch and leaf” type of distribution system...

(Installation....Show and Tell only)

- `su - ldm`
- `wget ftp://ftp.unidata.ucar.edu/pub/ldm/ldm-6.13.13.tar.gz`
- `gunzip -c ldm-6.13.13.tar.gz | pax -r '-s:/:/src/:'`
- `rm ldm-6.13.13.tar.gz # optional`
- `cd ldm-6.13.13/src`
- `export PATH=... # if necessary`
- `./configure [--enable-logging=local n] [--localstatedir=volatile_dir] [--disable-max-size] [--with-noaaport] [--with-gribinsert] [CC=...] [CFLAGS=...] >configure.log 2>&1`
- Password: ...
- `make install >make.log 2>&1`
- `make clean # optional`
- <https://www.unidata.ucar.edu/software/ldm/ldm-current/basics/source-install-steps.html>

Configuration

ldmd.conf

pqact.conf

ldmadmin watch
output

Data transfer example...

- Data
 - Inserting (Taylor – frozen.ssec.wisc.edu)
 - Requesting (Matthew – stearns.ssec.wisc.edu)

Community Contributions...??



Ohio State/BPCRC

- Polar WRF ?

NCAR

- AMPS/MPAS
?

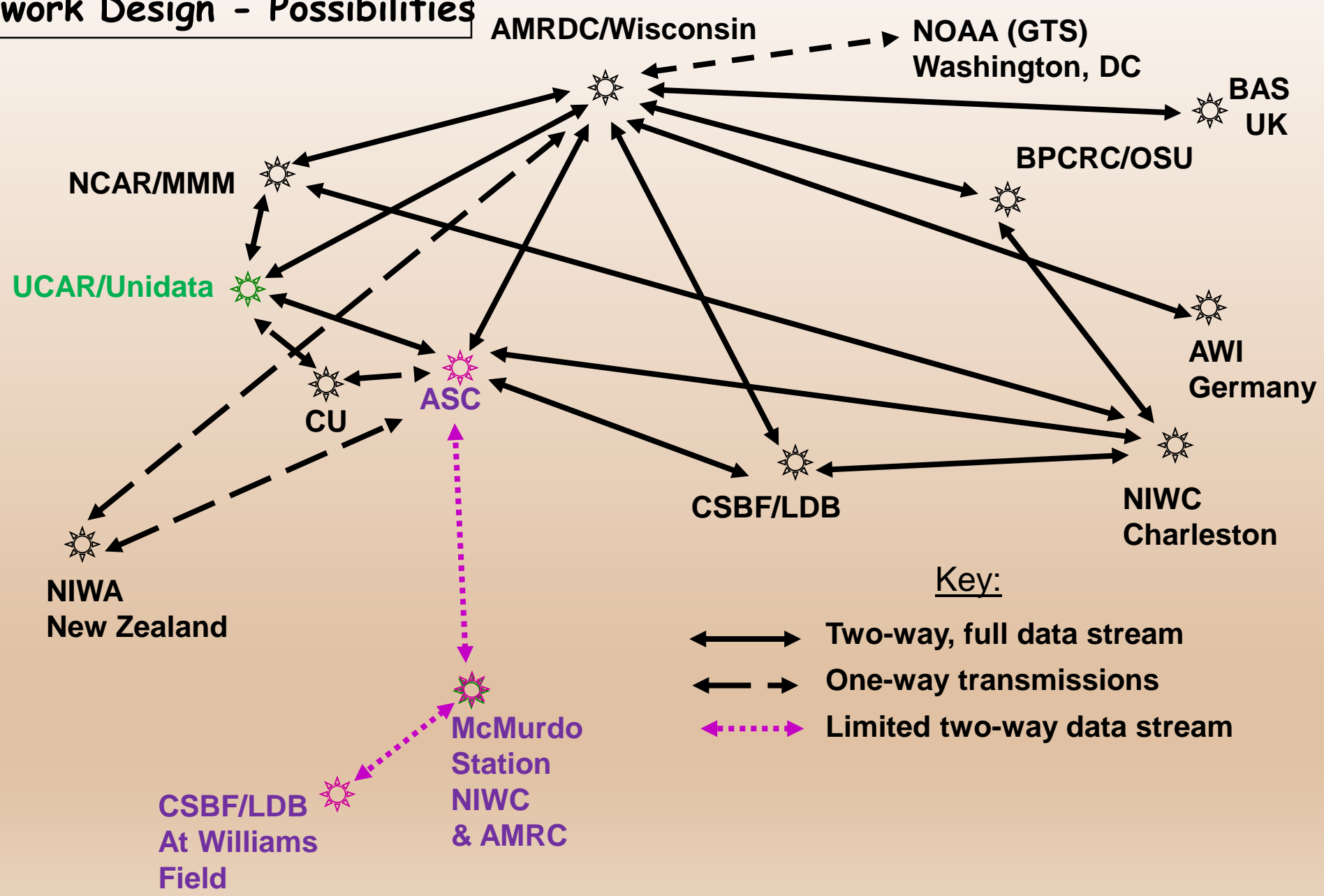
AMRDC

- PCI Fog
Product
- Other satellite
products

Anyone else??



Antarctic-IDD Network Design - Possibilities





Thank you!!



This material is based upon work supported in part by the United States Antarctic Program, Office of Polar Programs, Geosciences Directorate, and National Science Foundation. (Grant # 1951603 and 1924730)